



INDOFINE Chemical Company, Inc.

121 Stryker Lane, Bldg. 30, Suite 1 • Hillsborough, NJ 08844 • U.S.A.

Phone: (908) 359-6778 • FAX: (908) 359-1179

website: www.indofinechemical.com

e-mail: chemical@indofinechemical.com

CERTIFICATE OF ANALYSIS

Cat No.: 01-1051

Product: **2-METHOXYRESORCINOL**
(Pyrogallol-2-methyl ether, 1,3-Dihydroxy-2-methoxybenzene)

Cas Number: [29267-67-2]

Lot Number: 0804018

Chemical Formula: C₇H₈O₃

Molecular Weight: 140.14

Melting Point: 82.5-85°C

Appearance: Off white crystalline powder

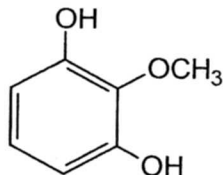
TLC: Chloroform:methanol (9:1)

Solubility: Soluble in chloroform

Moisture(KF) 0.30%

Storage: Store at +4°C

Purity (GC): 99.46%





INDOFINE Chemical Company, Inc.

121 Stryker Lane, Bldg. 30, Suite 1 • Hillsborough, NJ 08844 • U.S.A.

Phone: (908) 359-6778 • FAX: (908) 359-1179

website: www.indofinechemical.com

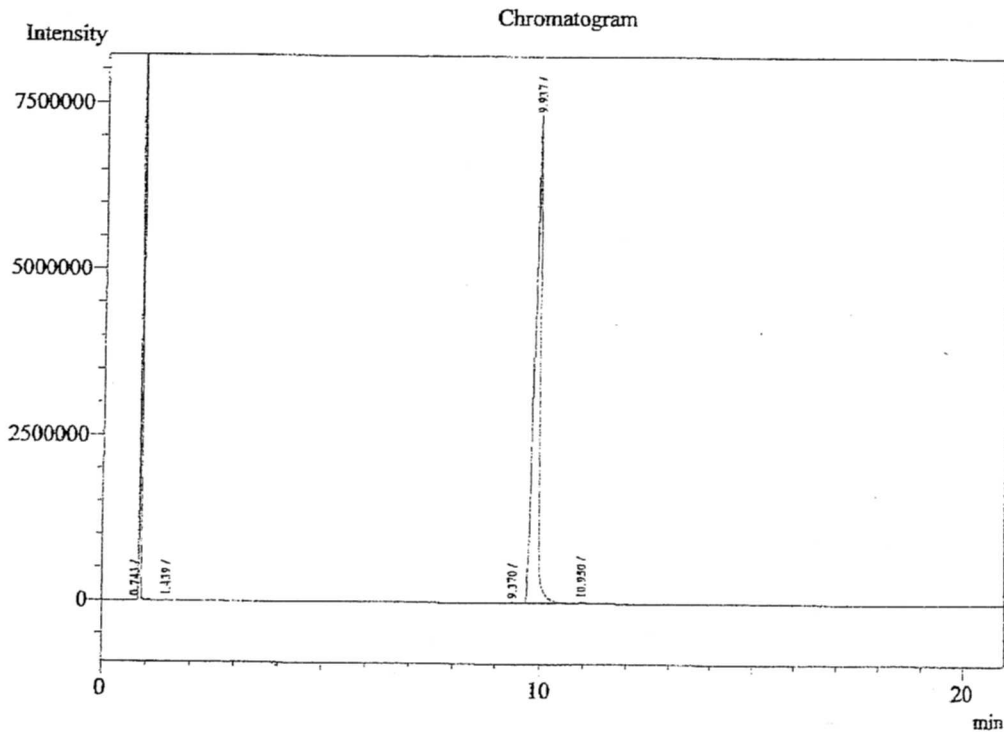
e-mail: chemical@indofinechemical.com

HPLC ANALYSIS

User Name : Ramana
Sample Name : 2-Methoxy resorcinol
Sample ID :
Method Name : D:\Methods\BRC Method.gcm
Data File Name : DA2008\Mar-2008\250308F.gcd

Catalog No.: 01-1051
Product name: 2-Methoxyresorcinol
Lot No.: 0804018

Description
Column : ZB-5
Column Temp : 80(2) - 10 - 250(2)°C
Inj Temp : 250°C
Det Temp : 300°C



Peak Table - Channel 1

Peak#	Ret.Time	Area	Height	Area%
1	0.743	13854	10853	0.0222
2	1.439	23139	12911	0.0371
3	9.370	78235	16932	0.1256
4	9.937	61949809	7321999	99.4592
5	10.950	221633	28598	0.3558
Total		62286670	7391293	100.0000